

# REFERENCE LIST



MOVING  
PARTS  
SKANDIA  
ELEVATOR



**SKANDIA**  
ELEVATOR



YEAR	CUSTOMER	CUSTOMER ORDER	COUNTRY	LINE	MACHINES
2016	Schramm Tino Lagereibedarf	Schweinezucht St. Michaelis Gm	Germany	L-Line	7
2016	Mepu OY	SO 14149/ 15-1125 Einar Linde	Norway	L-Line	6
2016	Tornum AB Export	105436,O27078-A	England	L-Line	10
2016	BDC Systems LTD	Kentra	England	L-Line	8
2016	Mepu OY	Koostetilaus PO 10602-merkityt	Finland	L-Line	10
2016	Aber Gabonatechnika Kft.	SZENTPETER	Hungary	L-Line	6
2016	BDC Systems LTD	258560	England	L-Line	7
2016	Mepu OY	SO 14536/Arvydas	Finland	L-Line	7
2016	Mepu OY	SO14513/Lauri	Finland	L-Line	5
2016	Mepu OY	Koostetilaus 10663-merkityt	Finland	L-Line	7
2016	Mepu OY	Koostetilaus 10763-merkityt	Finland	L-Line	7
2016	BDC Systems LTD	J W & M E Hammond & Son	England	L-Line	7
2016	Agroservis-Techn, Spol.SR.O	084/2016/KAN	Slovakia	L-Line	6
2016	Felleskjöpet Agri BA	9207716815	Norway	L-Line	4
2016	Mepu OY	49035	Finland	L-Line	4
2016	Mepu OY	SO 14093/Graintech Ltd (Udri)	Finland	L-Line	4
2016	Mepu OY	Sike Agri	Finland	L-Line	6
2016	JL AGRIPARTS	Villberga	Sweden	L-Line	5
<b>Total of the 18 largest L-Line projects 2016</b>					<b>116</b>
<b>Total of Other L-Line projects 2016</b>					<b>617</b>
2016	BDC Systems LTD	257612	England	I-Line	52
2016	Voronezmel'service Ltd	Hleborob	Russia	I-Line	17
2016	Agroing Brno s.r.o.	Praksice	Czech	I-Line	17
2016	Mepu OY	Upeskalni ( Pretpils)	Latvia	I-Line	17
2016	Agroing Brno s.r.o.	Tesov	Czech	I-Line	17
2016	Pawlica s.r.o	Skalice nad Svitavou	Czech	I-Line	14
2016	BDC Systems LTD	TN Hosier Order	England	I-Line	15
2016	Agroing Brno s.r.o.	Hrotovice	Czech	I-Line	13
2016	Tornum AB Export	105153, O26826	Latvia	I-Line	10
2016	Pawlica s.r.o	Ovčáry	Czech	I-Line	13
2016	Pawlica s.r.o	Smiřice	Czech	I-Line	9
2016	Pawlica s.r.o	Klučov	Czech	I-Line	11
2016	BDC Systems LTD	dmi - JWW15077	England	I-Line	11
2016	Agroing Brno s.r.o.	Radosovce SK	Czech	I-Line	14
2016	Agroing Brno s.r.o.	Luzany	Czech	I-Line	12
2016	Agroing Brno s.r.o.	Koberice	Czech	I-Line	13
2016	Tornum AB Export	103508, O26310	Poland	I-Line	13
2016	Tornum AB Export	105930, O27405	Poland	I-Line	9
<b>Total of the 18 largest I-Line projects 2016</b>					<b>277</b>
<b>Total of Other I-Line projects 2016</b>					<b>985</b>
2016	Tornum AB Export	104072,O26622	Ukraine	H-Line	20
2016	Pawlica s.r.o	Lubenec	Czech	H-Line	15
2016	Tornum AB Export	105263,O27111	Latvia	H-Line	18
2016	Tornum AB	104107,O26550B	Sweden	H-Line	21
2016	Agroing Brno s.r.o.	Uhlirské Janovice	Czech	H-Line	19
2016	Agri Consult	AGRISTOCK CD10217	France	H-Line	18
2016	PANNONAGRI Műszaki Tervező	SARKAD2	Hungary	H-Line	18
2016	Tornum AB Export	104559,O26804	Latvia	H-Line	11
2016	Tornum AB Export	105976	Ukraine	H-Line	10
2016	Agroing Brno s.r.o.	Velký Meder II SK	Czech	H-Line	23
<b>Total of the 10 largest H-Line projects 2016</b>					<b>173</b>
<b>Total of Other H-Line projects 2016</b>					<b>206</b>

**TOTAL OF ALL LINES 2016**

**2374**

YEAR	CUSTOMER	CUSTOMER ORDER	COUNTRY	LINE	number of MACHINES
------	----------	----------------	---------	------	--------------------

2015	Agroing Brno s.r.o.	Billice	Czech	L-Line	9
2015	Felleskjöpet Agri BA	9207-265780	Norway	L-Line	7
2015	Tornum AB Export	101742, O25065	Estonia	L-Line	8
2015	Can-Seed	45884	Canada	L-Line	6
2015	Mepu OY	varasto/M240-300k ennakko E3	Finland	L-Line	10
2015	BDC Systems LTD	Robert Frank, 255858	England	L-Line	7
2015	Mepu OY	varasto/M180-365k E3	Finland	L-Line	10
2015	Tornum AB	101976, O25205	Latvia	L-Line	6
2015	Sukup Europe	20383	Denmark	L-Line	7
2015	Mepu OY	Varasto / M180-205k Kesko E3	Finland	L-Line	10
2015	Tornum AB	O25202	Hungary	L-Line	3
2015	GM AgroTEHNIC	Quote X6727-3	Romania	L-Line	4
2015	Schramm Tino				
	Lagereibedarf	47329	Germany	L-Line	5
2015	Tornum AB	101710, O24876B	Sweden	L-Line	5
2015	BDC Systems LTD	P & B Chappell	England	L-Line	4
2015	Tornum AB Export	101623, O25025-A	England	L-Line	6
2015	Felleskjöpet Agri BA	9207-510978	Norway	L-Line	4
2015	BDC Systems LTD	255790	England	L-Line	5

**Total of the 18 largest L-Line projects 2015**

**116**

**Total of Other L-Line projects 2015**

**565**

2015	Tornum AB Export	102659,O25557	Romania	I-Line	29
2015	Tornum AB Export	102941,O25443	Romania	I-Line	24
2015	Agroing Brno s.r.o.	Zdounky	Czech	I-Line	20
2015	Tornum AB Export	103402, O26193	Latvia	I-Line	17
2015	BDC Systems LTD	255818	England	I-Line	12
2015	Agrosec Polska Sp. z o. o.	142_2015 Skandia	Poland	I-Line	8
2015	Agroing Brno s.r.o.	Rokytnice	Czech	I-Line	11
2015	Tornum AB Export	101676, O25052	Romania	I-Line	13
2015	Tornum AB Export	103198, O26077	Latvia	I-Line	10
2015	BDC Systems LTD	TN Cottrell R1 (120tph)	England	I-Line	9
2015	Tornum AB Export	101284, O24865	Romania	I-Line	10
2015	GM AgroTEHNIC	Quote 5619-2	Romania	I-Line	4
2015	BDC Systems LTD	255845	England	I-Line	10
2015	Tornum AB	O25163-B	Sweden	I-Line	11
2015	BDC Systems LTD	255948	England	I-Line	10
2015	BDC Systems LTD	255760	England	I-Line	8
2015	Agri Consult	CHAMBETTAZ CD8212	Switzerland	I-Line	8
2015	Pawlica s.r.o	Hanovice	Czech	I-Line	10

**Total of the 18 largest I-Line projects 2015**

**224**

**Total of Other I-Line projects 2015**

**849**

2015	Tornum AB Export	100679,O24253-B	Romania	H-Line	24
2015	Tornum AB Export	101646, O25041	Latvia	H-Line	29
2015	Agrosouz	462301	Ukraine	H-Line	11
2015	Tornum AB Export	102346, O25389	Latvia	H-Line	15
2015	Pawlica s.r.o	ALLSEEDS	Czech	H-Line	7
2015	Agri Consult	LABORDERIE CD10149	France	H-Line	10
2015	BDC Systems LTD	BK Bridge Order	England	H-Line	12
2015	Tornum AB Export	103405,O26187-C	England	H-Line	8
2015	Pawlica Sp. z o.o.	Agrolok Sp. z o.o.	Poland	H-Line	10
2015	Tornum AB Export	103404,O26187-B	England	H-Line	6

**Total of the 10 largest H-Line projects 2015**

**132**

**Total of Other H-Line 2015**

**151**

**TOTAL OF ALL LINES 2015**

**2037**

YEAR	CUSTOMER	CUSTOMER ORDER	COUNTRY	LINE	number of MACHINES
------	----------	----------------	---------	------	--------------------

2014	Mepu OY	Varasto Stock Elevators	Finland	L-Line	21
2014	Tornum AB Export	99088, O23426	Finland	L-Line	7
2014	Mepu OY	varasto (conveyors/elevators)	Finland	L-Line	10
2014	Aber Gabonatechnika Kft.	43312	Hungary	L-Line	9
2014	BDC Systems LTD	JW J00261	England	L-Line	7
2014	Tornum AB Export	99216,O23488	Sweden	L-Line	7
2014	Felleskjöpet Agri BA	9207803105	Norway	L-Line	4
2014	Akron Maskiner AB	Order56754	Sweden	L-Line	6
2014	BDC Systems LTD	255521	England	L-Line	6
2014	Té-Géta-68 KFT	43935	Hungary	L-Line	3
2014	Tornum AB Export	99972, O23822	Hungary	L-Line	6
2014	BDC Systems LTD	254204	England	L-Line	5
2014	Tornum AB Export	99577, O23612	Hungary	L-Line	5
2014	Aber Gabonatechnika Kft.	44181	Hungary	L-Line	4
2014	Felleskjöpet Agri BA	2852862993	Norway	L-Line	5
2014	Svenska Antti AB	Mail20140411	Norway	L-Line	4
2014	BDC Systems LTD	254136	England	L-Line	6
2014	Agro-Soyuz Ltd	42334	Ukraine	L-Line	4

**Total of the 18 largest L-Line projects 2014**

**119**

**Total of Other L-Line projects 2014**

**500**

2014	Tornum AB Export	100422, O24250	Sweden	I-Line	24
2014	Tornum AB	98592,O23029-L	Sweden	I-Line	12
2014	Siagra s.r.o.	KF 05/2014	Czech	I-Line	14
2014	Tornum AB Export	O24492	Poland	I-Line	18
2014	Tornum AB Export	99260, O23506	Sweden	I-Line	15
2014	Agroing Brno s.r.o.	Bohuslavice	Czech	I-Line	12
2014	BDC Systems LTD	BK Harnage	England	I-Line	11
2014	BDC Systems LTD	Tey Farm, Essex Farms	England	I-Line	13
2014	BDC Systems LTD	David Thompson - Mr Burdass	England	I-Line	10
2014	Tornum AB Export	100773,O24508-A	Lithuania	I-Line	13
2014	Tornum AB Export	99481, O23572	Romania	I-Line	11
2014	Voronezmel'service Ltd	Astapovo Stage 1	Russia	I-Line	6
2014	Tornum AB Export	100651, O24508	Lithuania	I-Line	8
2014	Tornum AB Export	100444, O24322	Poland	I-Line	13
2014	Agroing Brno s.r.o.	Velke Opatovice	Czech	I-Line	11
2014	Technology Investments	42869	Belarus	I-Line	7

2014	Schramm Tino				
	Lagereibedarf	Frauenpriessnitz	Germany	I-Line	6
2014	Sukup Europe	50971/68103	Denmark	I-Line	10

**Total of the 18 largest I-Line projects 2014**

**214**

**Total of Other I-Line projects 2014**

**795**

2014	Voronezmel'service Ltd	Junost	Russia	H-Line	18
2014	Voronezmel'service Ltd	Tretyakovskiy Oil Extraction	Russia	H-Line	10
2014	Tornum AB	99123, O23254-N	Sweden	H-Line	15
2014	Agrosec Polska Sp. z o. o.	44064	Poland	H-Line	16
2014	Agri Consult	Verrieres CD4891	France	H-Line	9
2014	PAWLICA EXPORT a.s.	41732	Poland	H-Line	13
2014	Nutrilita UAB	40659	Lithuania	H-Line	10
2014	Tornum AB Export	100876, O24695	Latvia	H-Line	12
2014	Tornum AB Export	98795, O23324	Sweden	H-Line	17
2014	BDC Systems LTD	253906	England	H-Line	10

**Total of the 10 largest H-Line projects 2014**

**130**

**Total of Other H-Line projects 2014**

**226**

**TOTAL OF ALL LINES 2014**

**1984**

YEAR	CUSTOMER	CUSTOMER ORDER	COUNTRY	LINE	number of MACHINES
------	----------	----------------	---------	------	--------------------

2013	Aber Gabonatechnika Kft.	40707	Hungary	L-Line	8
2013	Nutrilita UAB	39349	Lithuania	L-Line	4
2013	Tornum AB Export	96206, O21771	Latvia	L-Line	9
2013	Tornum AB	95567, O21665	Sweden	L-Line	7
2013	Tornum AB Export	96258, O21706	Latvia	L-Line	8
2013	BDC Systems LTD	Syngenta	England	L-Line	6
2013	Aber Gabonatechnika Kft.	41340	Hungary	L-Line	5
2013	Tornum AB Export	97006, O22237	Estonia	L-Line	7
2013	Mepu OY	Soo 7362 / Sike Agri	Finland	L-Line	7
2013	Mepu OY	Soo 68882/AgrEKO SIA	Finland	L-Line	5
2013	Aber Gabonatechnika Kft.	40895	Hungary	L-Line	5
2013	Technology Invest Ltd	40812	Belarus	L-Line	5
2013	Akron Maskiner AB	54045	Sweden	L-Line	3
2013	Mepu OY	Ennakko	Finland	L-Line	8
2013	Tornum AB Export	96220, O21860	Lithuania	L-Line	8
2013	Aber Gabonatechnika Kft.	39386	Hungary	L-Line	5
2013	Tornum AB Export	97346/O22436	Hungary	L-Line	7
2013	Tornum AB Export	97293/O22399	Hungary	L-Line	4

**Total of the 18 largest L-Line projects 2013**

**111**

**Total of Other L-Line projects 2013**

**692**

2013	Tornum AB Export	98182, O23054-B	Romania	I-Line	31
2013	Voronezmel'service Ltd	Ossetia	Russia	I-Line	12
2013	Tornum AB	95180, O21533	Poland	I-Line	17
2013	Tornum AB	95377, O21605	Romania	I-Line	14
2013	Technology Invest Ltd	38949	Belarus	I-Line	17
2013	Agroing Brno s.r.o.	38220	Czech	I-Line	13
2013	JV PARUS Ltd	38559	Kazakhstan	I-Line	11
2013	Agroing Brno s.r.o.	2013-0799/Rosice	Czech	I-Line	12
2013	Tornum AB Export	96696, O22076	Romania	I-Line	14
2013	Agroing Brno s.r.o.	No 985/12/DB	Czech	I-Line	7
2013	BDC Systems LTD	J W Rose Cottage	England	I-Line	15
2013	Pawlica s.r.o	Radovesnice II	Czech	I-Line	13
2013	Mepu OY	Soo7355 Ekoniva Skandia	Finland	I-Line	10
2013	BDC Systems LTD	252252	England	I-Line	12
2013	Gold Corn s.r.o.	38466	Hungary	I-Line	8
2013	Sukup Europe	65015 Eskegård Avlscenter	Denmark	I-Line	7
2013	Aber Gabonatechnika Kft.	39014	Hungary	I-Line	8
2013	Tornum AB	95639, O21541-A	Sweden	I-Line	10

**Total of the 18 largest I-Line projects 2013**

**231**

**Total of Other I-Line projects 2013**

**1013**

2013	Tornum AB Export	97806, O22827	Latvia	H-Line	27
2013	Technology Invest Ltd	40871	Belarus	H-Line	23
2013	Tornum AB Export	97333, O2263	Ukraine	H-Line	18
2013	Westeel	37754	Canada	H-Line	13
2013	Nutrilita UAB	Ingmartus	Lithuania	H-Line	11
2013	Agroing Brno s.r.o.	Srazovice	Czech	H-Line	14
2013	Tornum AB	95864, O21742	Latvia	H-Line	19
2013	Voronezmel'service Ltd	39034	Russia	H-Line	6
2013	Sukup Europe	64468/47662	Denmark	H-Line	9
2013	Pawlica s.r.o	38595	Czech	H-Line	11

**Total of the 10 largest H-Line projects 2013**

**151**

**Total of Other H-Line projects 2013**

**174**

**TOTAL OF ALL LINES 2013**

**2372**

YEAR	CUSTOMER	CUSTOMER ORDER	COUNTRY	LINE	number of MACHINES
------	----------	----------------	---------	------	--------------------

2012	BDC Systems LTD	34049	England	L-Line	9
2012	Tornum AB	94864, O21335	Sweden	L-Line	11
2012	Holmquist T Teknik AB	34511	Sweden	L-Line	7
2012	Antti Baltic OÜ	Jasmines	Latvia	L-Line	10
2012	Technology Invest Ltd	37765	Belarus	L-Line	8
2012	Mepu OY	SO04825/Akershus Traktor AS	Finland	L-Line	5
2012	Tornum AB	91782, O19729-B	Sweden	L-Line	5
2012	Technology Invest Ltd	37120	Belarus	L-Line	6
2012	Technology Invest Ltd	SK-TI-06-07-2012	Belarus	L-Line	7
2012	Technology Invest Ltd	35134	Belarus	L-Line	8
2012	Mepu OY	SO04501/Mattila Kalle	Finland	L-Line	7
2012	ZUPTOR Sp. zo.o.	34519	Poland	L-Line	8
2012	BDC Systems LTD	J W Installations, Ness Hall	England	L-Line	7
2012	Mepu OY	35935	Belarus	L-Line	8
2012	BDC Systems LTD	223035	England	L-Line	7
2012	Tornum AB	92972, O20272-A	Sweden	L-Line	5
2012	Tornum AB	Savaria/O20354-A	Hungary	L-Line	5
2012	BDC Systems LTD	223138	England	L-Line	6

**Total of the 18 largest L-Line projects 2012 129**

**Total of Other L-Line projects 2012 740**

2012	Voronezmel'service Ltd	Lisko Broiler	Russia	I-Line	30
2012	Voronezmel'service Ltd	Delivery No 3	Russia	I-Line	23
2012	Voronezmel'service Ltd	Delivery No 4	Russia	I-Line	20
2012	Voronezmel'service Ltd	Delivery No 5	Russia	I-Line	15
2012	Voronezmel'service Ltd	Delivery No 6	Russia	I-Line	16
2012	Voronezmel'service Ltd	Delivery No 7	Russia	I-Line	13
2012	Tornum AB	94867, O21175	Poland	I-Line	20
2012	Tornum AB	94732, O21213	Sweden	I-Line	21
2012	Technology Invest Ltd	35436	Belarus	I-Line	40
2012	Agroing Brno s.r.o.	Horni Mostenice	Czech	I-Line	13
2012	Tornum AB	94913, O21409, Gyls	Lithuania	I-Line	13
2012	Agroing Brno s.r.o.	37179	Czech	I-Line	19
2012	Tornum AB	94594, O21267	Latvia	I-Line	19
2012	Tornum AB	94983, O21431, Cordos	Romania	I-Line	15
2012	Tornum AB	93324, O20383-B	Poland	I-Line	13
2012	Sukup Europe	60629	Denmark	I-Line	12
2012	Technology Invest Ltd	35204	Belarus	I-Line	17
2012	BDC Systems LTD	JW Installations, Burton Agnes	England	I-Line	17

**Total of the 18 largest I-Line projects 2012 336**

**Total of Other I-Line projects 2012 1163**

2012	Sukup Europe	60722	Denmark	H-Line	11
2012	Tornum AB	92615, O20083-B	Ukraine	H-Line	23
2012	Pawlica s.r.o	37384	Czech	H-Line	16
2012	Nutrilita UAB	34616	Lithuania	H-Line	8
2012	Voronezmel'service Ltd	Okks poultry plant	Russia	H-Line	7
2012	Nutrilita UAB	34868	Lithuania	H-Line	9
2012	Tornum AB	92902, O20167	Sweden	H-Line	12
2012	Pannonagri Mezögazdas gi	30715	Romania	H-Line	18
2012	Nutrilita UAB	Kaliningrad	Russia	H-Line	12
2012	Sukup Europe	44445/61579AgriTradeOravita	Denmark	H-Line	8

**Total of the 10 largest H-Line projects 2012 124**

**Total of Other H-Line projects 2012 130**

**TOTAL OF ALL LINES 2012 2622**

YEAR	CUSTOMER	CUSTOMER ORDER	COUNTRY	LINE	number of MACHINES
------	----------	----------------	---------	------	--------------------

2011	Technology Invest Ltd	30138	Belarus	L-Line	23
2011	BDC Systems LTD	29976	England	L-Line	17
2011	BDC Systems LTD	30513	England	L-Line	9
2011	BDC Systems LTD	222045	England	L-Line	7
2011	BDC Systems LTD	221135	England	L-Line	9
2011	BDC Systems LTD	221125	England	L-Line	8
2011	Vebe Teknik AB	Doggy	Sweden	L-Line	6
2011	BDC Systems LTD	30501	England	L-Line	7
2011	BDC Systems LTD	30818	England	L-Line	8
2011	Mepu OY	SO02143 / Weckström	Finland	L-Line	6
2011	Tornum AB	31143	Sweden	L-Line	4
2011	Tornum AB	88790, O18646	Sweden	L-Line	5
2011	Svenska Antti AB	8220	Sweden	L-Line	4
2011	Tornum AB	O19206,90711	Sweden	L-Line	5
2011	Antti-Teollisuus OY	30358	Finland	L-Line	4
2011	Aber Gabonatechnika Kft.	Tomajmonostora	Hungary	L-Line	4
2011	Tornum AB	89360	Sweden	L-Line	5
2011	Tornum AB	90970, O19344	Poland	L-Line	5

**Total of the 18 largest L-Line projects 2011**

**136**

**Total of Other L-Line projects 2011**

**700**

2011	Voronezmel'service Ltd	Kirsanov	Russia	I-Line	27
2011	Voronezmel'service Ltd	Delivery No 2	Russia	I-Line	22
2011	Voronezmel'service Ltd	Muchkap	Russia	I-Line	16
2011	Voronezmel'service Ltd	30144	Russia	I-Line	16
2011	Voronezmel'service Ltd	Muchkap	Russia	I-Line	14
2011	Agroing Brno s.r.o.	Pluhuv Zdar	Czech	I-Line	20
2011	Agroing Brno s.r.o.	Selpice	Czech	I-Line	16
2011	Voronezmel'service Ltd	30746	Russia	I-Line	12
2011	BDC Systems LTD	33032	England	I-Line	15
2011	Tornum AB	89734, O18896-B	Ukraine	I-Line	12
2011	Tornum AB	90336, O19075	Poland	I-Line	12
2011	Tornum AB	91710, O19838-B	Romania	I-Line	13
2011	Tornum AB	89026, O18703	Ukraine	I-Line	14
2011	Sukup Europe	31687	Bulgaria	I-Line	8
2011	Tornum AB	89054, O18729	Ukraine	I-Line	14
2011	Pannonagri Mezögazdas gi	30731	Romania	I-Line	13
2011	BDC Systems LTD	30764	England	I-Line	10
2011	BDC Systems LTD	32976	England	I-Line	7

**Total of the 18 largest I-Line projects 2011**

**261**

**Total of Other I-Line projects 2011**

**1201**

2011	Tornum AB	Kozyatin Kryazh	Sweden	H-Line	34
2011	Tornum AB	Zhmerynka	Ukraine	H-Line	23
2011	Tornum AB	Rososha, Kriazh	Ukraine	H-Line	21
2011	Voronezmel'service Ltd	Delivery No 1	Russia	H-Line	18
2011	Voronezmel'service Ltd	OKSK Conveyors	Russia	H-Line	11
2011	Brice Baker Systems Ltd	8734	Latvia	H-Line	10
2011	Gold Corn s.r.o.	31082	Hungary	H-Line	13
2011	Agri Consult	33754	Frankrike	H-Line	6
2011	Pannonagri Mezögazdas gi	30969	Ungern	H-Line	11
2011	Pawlica s.r.o	SMRK	Tjeckien	H-Line	8

**Total of the 10 largest H-Line projects 2011**

**155**

**Total of Other H-Line projects 2011**

**199**

**TOTAL OF ALL LINES 2011**

**2652**



YEAR	CUSTOMER	CUSTOMER ORDER	COUNTRY	LINE	number of MACHINES
------	----------	----------------	---------	------	--------------------

2010	Mepu OY	Qoute 924/2 Belorussia	Belarus	L-Line	32
2010	Aber Gabonatechnika Kft.	Oroszaza	Hungary	L-Line	7
2010	Tornum AB	16235, O16893-B	Finland	L-Line	6
2010	Tornum AB	88296, O18416	Lithuania	L-Line	6
2010	Svenska Antti AB	27824	Sweden	L-Line	4
2010	Tornum AB	O17464/Lillegården	Sweden	L-Line	6
2010	CO.M.I.GE. di				
	Mezzadra Pierluigi eC	27997	Italy	L-Line	3
2010	BDC Systems LTD	27776	England	L-Line	8
2010	Brice Baker Systems Ltd	C08130	England	L-Line	8
2010	Svenska Antti AB	Lyngby Gård	Sweden	L-Line	5
2010	BDC Systems LTD	27314	England	L-Line	6
2010	Tornum AB	88106, O18301-B	Sweden	L-Line	6
2010	MOLL GMBH+CO KG, WILLI	Gornewitzer	Germany	L-Line	2
2010	Mepu OY	Qoute 924/2 Belorussia	Belarus	L-Line	8
2010	Mepu OY	PO00689	Finland	L-Line	6
2010	Holmquist T Teknik AB	27634	Sweden	L-Line	4
2010	Mepu OY	SO00459/Riistaveden viljakolho	Finland	L-Line	5
2010	Tornum AB	O17432-A,16445	Sverige	L-Line	5
<b>Total of the 18 largest L-Line projects 2010</b>					<b>127</b>
<b>Total of Other L-Line projects 2010</b>					<b>684</b>

2010	Voronezmel'service Ltd	JSC "Triumf" Sasovo Ryasan reg	Russia	I-Line	19
2010	Tornum AB	16144 / O17297-B del 1	Sweden	I-Line	19
2010	Tornum AB	88233	Romania	I-Line	26
2010	Tornum AB	18165, O17526-B	Latvia	I-Line	12
2010	BDC Systems LTD	26971	England	I-Line	10
2010	BDC Systems LTD	27671	England	I-Line	16
2010	Tornum AB	16922, O17567-A	Poland	I-Line	14
2010	Siagra s.r.o.	Netrebice	Czech	I-Line	13
2010	Voronezmel'service Ltd	27282	Russia	I-Line	9
2010	BDC Systems LTD	30095	England	I-Line	13
2010	Brice Baker Systems Ltd	26966	England	I-Line	12
2010	Tornum AB	28440	Poland	I-Line	14
2010	BDC Systems LTD	30097	England	I-Line	7
2010	BDC Systems LTD	30096	England	I-Line	6
2010	Brice Baker Systems Ltd	26634	England	I-Line	12
2010	Agritec GMBH	Herr Hastedt	Germany	I-Line	4
2010	Sukup Europe	32801	Latvia	I-Line	8
2010	Farwick GmbH	BGP Lidköping	Sverige	I-Line	9
<b>Total of the 18 largest I-Line projects 2010</b>					<b>223</b>
<b>Total of Other I-Line projects 2010</b>					<b>682</b>

2010	Brice Baker Systems Ltd	29777	Russia	H-Line	26
2010	Pawlica s.r.o	26701	Czech	H-Line	17
2010	Sukup Europe	32368	Denmark	H-Line	7
2010	Ahrens Group PTY LTD	30057	Australia	H-Line	4
2010	Siagra s.r.o.	27354	Czech	H-Line	13
2010	Sukup Europe	34062	Denmark	H-Line	4
2010	Agri Consult	27247	France	H-Line	4
2010	BDC Systems, LTD	29013	England	H-Line	8
2010	Brice Baker Systems Ltd	8715	Russia	H-Line	8
2010	Agri Consult	Bochou Negoce C09-489	France	H-Line	3
<b>Total of the 10 largest H-Line projects 2010</b>					<b>94</b>
<b>Total of Other H-Line projects 2010</b>					<b>49</b>

**TOTAL OF ALL LINES 2010**

**1859**

YEAR	CUSTOMER	CUSTOMER ORDER	COUNTRY	LINE	number of MACHINES
------	----------	----------------	---------	------	--------------------

2009	Sukup Europe	24238	Denmark	L-Line	9
2009	Mepu OY	32036-32056/Kalinkovichi	Finland	L-Line	19
2009	BDC Systems LTD	24063	England	L-Line	10
2009	Tornum AB	O15992-B	Sweden	L-Line	8
2009	BDC Systems LTD	SAMLEV MED AKRON 1-2508	England	L-Line	8
2009	BDC Systems LTD	24611	England	L-Line	9
2009	BDC Systems LTD	23851	England	L-Line	10
2009	Tornum AB	O15047	Sweden	L-Line	6
2009	Brice Baker Systems Ltd	23412	England	L-Line	7
2009	Tornum AB	O16191	Lithuania	L-Line	4
2009	Pow Tech AB	7391	Sweden	L-Line	5
2009	Pawlica s.r.o	Hostoun	Czech	L-Line	3
2009	Tornum AB	O14365	Sweden	L-Line	6
2009	Felleskjöpet Agri BA	9207-777556	Norway	L-Line	4
2009	BDC Systems LTD	23946	England	L-Line	7
2009	Akron Maskiner AB	Novab Hammersta Gård	Sweden	L-Line	5
2009	Brice Baker Systems Ltd	26612	England	L-Line	6
2009	Tornum AB	15681	Sverige	L-Line	6

**Total of the 18 largest L-Line projects 2009**

**132**

**Total of Other L-Line projects 2009**

**714**

2009	Voronezmel'service Ltd	Novokhopersk - Conveyors	Russia	I-Line	20
2009	BDC Systems, LTD	25758	Iran	I-Line	16
2009	Voronezmel'service Ltd	Kshen - SEI / KTIF	Russia	I-Line	14
2009	BDC Systems LTD	23496	England	I-Line	16
2009	BDC Systems LTD	Coastal Grain	England	I-Line	15
2009	Voronezmel'service Ltd	Ostrogzhsk - SEI	Russia	I-Line	7
2009	Pawlica s.r.o	Piestany	Czech	I-Line	14
2009	Tornum AB	15518	Ukraine	I-Line	10
2009	Mepu OY	32021 / Dambisi	Latvia	I-Line	12
2009	BDC Systems LTD	23496	England	I-Line	6
2009	Siagra s.r.o.	Sepekov	Czech	I-Line	10
2009	Voronezmel'service Ltd	Ostrogzhsk - Conveyor	Russia	I-Line	9
2009	Voronezmel'service Ltd	Novokhopersk - KTIF	Russia	I-Line	5
2009	Siagra s.r.o.	Morice	Czech	I-Line	16
2009	Brice Baker Systems Ltd	C08090	England	I-Line	8
2009	BDC Systems LTD	23585	England	I-Line	11
2009	Mepu OY	31990	Latvia	I-Line	7
2009	Schramm Tino Lagereibedarf	24543	Tyskland	I-Line	10

**Total of the 18 largest I-Line projects 2009**

**206**

**Total of Other I-Line projects 2009**

**709**

2009	Brice Baker Systems Ltd	8588	Russia	H-Line	29
2009	Sukup Europe	25049	Romania	H-Line	19
2009	Brice Baker Systems Ltd	8499	Russia	H-Line	28
2009	Brice Baker Systems Ltd	8588	Russia	H-Line	13
2009	Voronezmel'service Ltd	Novokhopersk - SEI	Russia	H-Line	8
2009	Agroservis-Tech, Spol.SR.O	Levice	Slovakia	H-Line	16
2009	ARAJ Sp.zo.o,P.P.W	DERENIVKA	Poland	H-Line	8
2009	Brice Baker Systems Ltd	Skandia 23747	Russia	H-Line	9
2009	Agri Consult	26561	France	H-Line	4
2009	Gold Corn s.r.o.	Batyk	Hungary	H-Line	10

**Total of the 10 largest H-Line projects 2009**

**144**

**Total of Other H-Line projects 2009**

**39**

**TOTAL OF ALL LINES 2009**

**1944**

YEAR	CUSTOMER	CUSTOMER ORDER	COUNTRY	LINE	number of MACHINES
2008	Agroservis-Techn, Spol.SR.O	Mlynica	Slovakia	L-Line	10
2008	Agroservis-Techn, Spol.SR.O	Nova Bodva	Slovakia	L-Line	8
2008	Aber Gabonatechnika Kft.	Letenye	Hungary	L-Line	7
2008	Brice Baker Systems Ltd	21551	England	L-Line	7
2008	BDC Systems LTD	9623	England	L-Line	5
2008	Holmquist T Teknik AB	2695 URBAN JÖNSSON	Sweden	L-Line	5
2008	Tornum AB	O14189 PEKKA LAHTINEN, FI	Sweden	L-Line	6
2008	BDC Systems LTD	8827	England	L-Line	6
2008	BDC Systems LTD	8854	England	L-Line	6
2008	Akron Maskiner AB	40851 RÖSÄNG	Sweden	L-Line	3
2008	BDC Systems LTD	8561	England	L-Line	7
2008	Tornum AB	O14452-B	Sweden	L-Line	5
2008	Agroservis-Techn, Spol.SR.O	9022	Slovakia	L-Line	5
2008	ARAJ Sp.zo.o,P.P.W	MULDAS	Poland	L-Line	7
2008	Mepu OY	Latvia	L-Line	2	
2008	Tornum AB	O14314	Sweden	L-Line	3
2008	BDC Systems LTD	9184	England	L-Line	4
2008	BDC Systems LTD	9446	England	L-Line	5
<b>Total of the 18 largest L-Line projects 2008</b>					<b>101</b>
<b>Total of Other L-Line projects 2008</b>					<b>813</b>
2008	Voronezmel'service Ltd	Delivery No 2	Russia	I-Line	40
2008	Voronezmel'service Ltd	Delivery No 1	Russia	I-Line	32
2008	Brice Baker Systems Ltd	8958	Russia	I-Line	21
2008	Tornum AB	O13635-K	Latvia	I-Line	14
2008	Tornum AB	O14453-G	Sweden	I-Line	20
2008	BDC Systems, LTD	9684	Malawi	I-Line	12
2008	BDC Systems, LTD	20457	England	I-Line	12
2008	Mepu OY	31588/Haase	Finland	I-Line	14
2008	Pawlica s.r.o	Dolni Újezd	Czech	I-Line	11
2008	Tornum AB	O14282-B	Sweden	I-Line	13
2008	Tornum AB	O13635-K	Latvia	I-Line	10
2008	Tornum AB	9306	Sweden	I-Line	13
2008	Siagra s.r.o.	Cizkrajov	Czech	I-Line	13
2008	Siagra s.r.o.	Bylany	Czech	I-Line	16
2008	Tornum AB	O14288-H	Sweden	I-Line	8
2008	Siagra s.r.o.	Cizkrajov	Czech	I-Line	9
2008	Siagra s.r.o.	Lipuvka II	Tjeckien	I-Line	10
2008	Pawlica s.r.o	Skalice II	Tjeckien	I-Line	6
<b>Total of the 18 largest I-Line projects 2008</b>					<b>274</b>
<b>Total of Other I-Line projects 2008</b>					<b>1141</b>
2008	Brice Baker Systems Ltd	9164	Russia	H-Line	26
2008	Tornum AB	O13688-K	Sweden	H-Line	39
2008	Brice Baker Systems Ltd	9164	Russia	H-Line	14
2008	ARAJ Sp.zo.o,P.P.W	KARLOVKA	Poland	H-Line	8
2008	Sukup Europe	22960	Denmark	H-Line	3
2008	ARAJ Sp.zo.o,P.P.W	JAGOTIN	Poland	H-Line	7
2008	ARAJ Sp.zo.o,P.P.W	DERENIVKA	Poland	H-Line	6
2008	ARAJ Sp.zo.o,P.P.W	PALATKI	Poland	H-Line	6
2008	ARAJ Sp.zo.o,P.P.W	MRIJA	Polen	H-Line	4
2008	Brice Baker Systems Ltd	8573	England	H-Line	2
<b>Total of the 10 largest H-Line projects 2008</b>					<b>115</b>
<b>Total of Other H-Line projects 2008</b>					<b>74</b>

**TOTAL OF ALL LINES 2008**

**2518**



# CASE STUDIES



**SKANDIA**  
ELEVATOR

# SC POPASUL TREBES SRL

## BACAU, ROMANIA

- › **Company:** SC Popasul Trebes SRL
- › **Facility name:** SC Popasul Trebes SRL
- › **Location:** Bacau, Margineni, Romania
- › **Established:** 2014
- › **Year of Skandia additions:** 2014
- › **Dealer:** Tornum SRL Romania

- › **Capacity:** Hine 100 t/h
- › **Storage capacity:** 50 000 t
- › **Handled grain:** Maize, wheat and barley.
- › **Machinery:** 29 conveyors and 7 elevators.



### › **Main reasons for choosing Skandia Elevator equipment?**

Good technical assistance from the local dealer. Quality equipment. Flexible design, suitable for our needs. No problem with conveying capacity.



# CRAVEN GRAIN

## LEOMINSTER, ENGLAND

- › **Company:** Craven Grain Storage Ltd
- › **Facility name:** Craven Grain Storage Ltd
- › **Location:** Leominster, Herefordshire
- › **Established:** 1980
- › **Year of Skandia additions:** 2012 and 2016
- › **Dealer:** BDC system Ltd

- › **Capacity:** I-line, 60 t/h and 120 t/h. H-line, 200 t/h.
- › **Storage capacity:** 39 000 t
- › **Handled grain:** Wheat, barley, OSR and beans.
- › **Machinery:** 4 machines and Conveyor Walks.



› **Main reasons for choosing Skandia Elevator equipment?**

Dealer influence and back up, simplicity of installing equipment, catwalks and conveyors from one company.



# BELALKO

## BREST, BELARUS

- › **Company:** Brest liqueur plant Belalko
- › **Facility name:** Belalko
- › **Location:** 224005, Brest, Sovetskaya Street, 1 Belarus
- › **Established:** 1961
- › **Year of Skandia additions:** 2013
- › **Dealer:** Joint Stock Company Borisov plant Metallist
  
- › **Capacity:** H-line 100 t/h
- › **Storage capacity:** 24 000 m<sup>3</sup>
- › **Handled grain:** Rye, wheat and triticale.
- › **Machinery:** 23 machines, elevator and conveyors.



### › **Main reasons for choosing Skandia Elevator equipment?**

The dealer offered Skandia Elevator equipment as reliable, time-tested and cost-effective.





# OKSK PULTRY PLANT

## RYZIAN REGION, RUSSIA

- › **Company:** Closed Joint Stock Company  
Oskk poultry plant
- › **Facility name:** Oskk poultry plant separate  
subdivision Feed plant
- › **Location:** Oskkiy settlement, Ryazan district,  
Ryazan region, Russian Federation
- › **Established:** 1977
- › **Year of Skandia additions:** 2011-2016
- › **Dealer:** NPF Voronezhmelservice Ltd.
  
- › **Capacity:** Hline and Hline, 100 t/h and 150 t/h.
- › **Storage capacity:** 20 000 t
- › **Handled grain:** Wheat, barley, corn, sunflower  
cake, sunflower extraction cake, canola cake and mi-  
neral raw materials.
- › **Machine:** 31 machines, conveyors and elevators.



› **Main reasons for choosing Skandia Elevator equipment?**

Cost/quality ratio; reliability of the equipment; short delivery terms; the possibility of getting the spare parts in short time.



# CORDOS LUCIAN

## SIMAND, ROMANIA

- › **Company:** Cordos Lucian Intreprindere Individuala
- › **Facility name:** Cordos Lucian Intreprindere Individuala
- › **Location:** Village Simand, county of Arad, Romania
- › **Established:** 2013
- › **Year of Skandia additions:** 2014
- › **Dealer:** Tornum SRL Romania

- › **Capacity:** H-Line 100 t/h, H-Line 200 t/h.
- › **Storage capacity:** 20 000 t in 8 equal size silos
- › **Handled grain:** Wheat, corn, sunflower, rapeseeds, and barley.
- › **Machinery:** 17 conveyors and 5 elevators.

› **Main reasons for choosing Skandia Elevator equipment?**

Self-regulated feeding, Swedish product, Nord gear drive are some appreciated Skandia Elevator values.



# ZEMAGRO

## DRAŽŮVKY, CZECH

- › **Company:** ZEMAGRO s.r.o. Strážovice
- › **Facility name:** ZEMAGRO s.r.o. Strážovice
- › **Location:** Dražůvky, Czech
- › **Established:** 2013
- › **Year of Skandia additions:** 2014
- › **Dealer:** Agroing
  
- › **Capacity:** Hline and Hline, 60 t/h and 120 t/h.
- › **Storage capacity:** 18 412 t
- › **Handled grain:** Wheat, rape seeds and corn.
- › **Machinery:** 11 conveyors, 6 elevators and Conveyor Walks.



- › **Main reasons for choosing Skandia Elevator equipment?**  
Optimal balance between quality and price.



# JCS INGMARTUS

## LELERVISKIU, LITHUANIA

- › **Company:** JSC Ingmartus
- › **Facility name:** JSC Ingmartus
- › **Location:** Lelerviskiu village, Kaunas district, Lithuania
- › **Established:** 2012-2013
- › **Year of Skandia additions:** 2012-2013
- › **Dealer:** Nutrilita

- › **Capacity:** Hline 120 t/h
- › **Storage capacity:** 12 000 t
- › **Handled grain:** Wheat, barley, rape seeds, corn, triticale, beans and peas.
- › **Machinery:** Elevators and conveyors.

- › **Main reasons for choosing Skandia Elevator equipment?**  
Our dealer relationship, the brand reputation and a cost-effective system.



# MERTOUN ESTATE FARMS

## MELROSE, SCOTLAND

- › **Company:** Mertoun Estate Farms Ltd
- › **Facility name:** Mertoun Estate Farms Ltd
- › **Location:** Ploughlands Farm, Maxton,  
Melrose Roxburghshire
- › **Established:** 1982
- › **Year of Skandia additions:** 2012 and 2016
- › **Dealer:** DMI Mechanical Engineers Ltd, Kelso
  
- › **Capacity:** Hline 80t/h.
- › **Storage capacity:** 7 000 Tonne Floor Storage
- › **Handled grain:** Wheat, barley, oilseed rape  
and oats.
- › **Machinery:** 11 machines, KTIG 30/40, SEI50/18,  
KTIF30/33 and KTIBU 30/33.
  
- › **Main reasons for choosing Skandia Elevator equipment?**  
Previous experience with Skandia equipment. Recommended by dealer. Specification to suit needs of the system.



# KALLE MATTILA

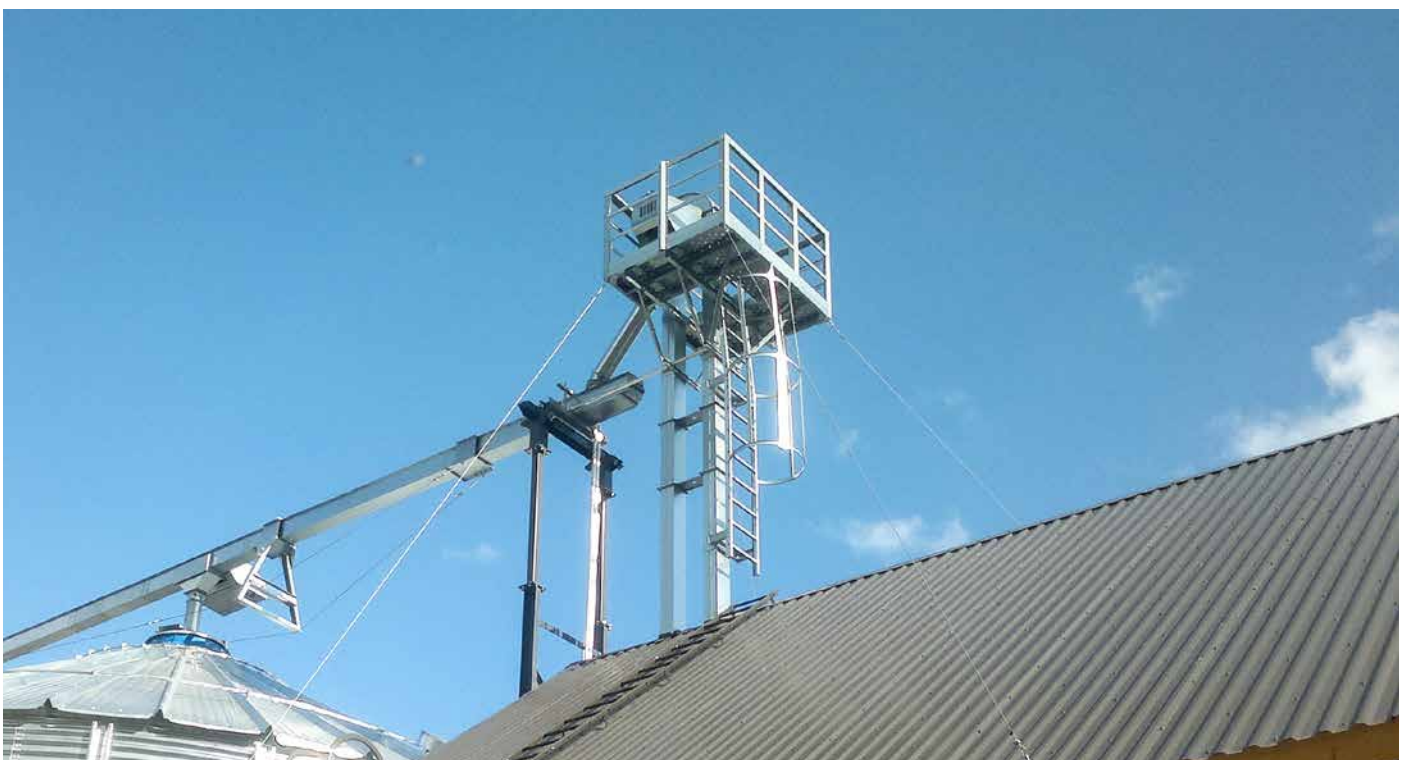
## LOIMAA, FINLAND

- › **Company:** Kalle Mattila,
- › **Facility name:** Kalle Mattila,
- › **Location:** FI-32200 Loimaa, Finland
- › **Established:** 2012
- › **Year of Skandia additions:** 2012
- › **Dealer:** Mepu
  
- › **Capacity:** L-line 40 t/h
- › **Storage capacity:** 2 200 m<sup>3</sup>
- › **Handled grain:** Barley and wheat.
- › **Machinery:** 5 conveyors and 2 elevators.



› **Main reasons for choosing Skandia Elevator equipment?**

Mepu seller recommended and Skandia products are high-quality.



# JARL PETER LUNDSTRÖM

## LUVIA, FINLAND

- › **Company:** Jarl Peter Lundström
- › **Facility name:** Jarl Peter Lundström
- › **Location:** FI-29100 Luvia, Finland
- › **Established:** 2013
- › **Year of Skandia additions:** 2013
- › **Dealer:** Mepu

- › **Capacity:** L-line 60 t/h
- › **Storage capacity:** 1 110 m<sup>3</sup>
- › **Handled grain:** Barley, wheat and oats.
- › **Machinery:** Two conveyors and one elevator.

- › **Main reasons for choosing Skandia Elevator equipment?**  
Mepu seller recommended.





**SKANDIA**  
ELEVATOR